

confident

urban

ELECTRIC SCOOTERS

Batt⁺RE[™]

#DontBeFuelish[™]

introducing Stor:ie

After **ONE** (the boldest one out there),
LOEV (the agile and the affordable
one) we bring to you **STORIE** - Smart,
Safe, Robust, Affordable and Stylish
and thus begins the one | loev | stor:ie.





a design built around you

Everything starts with people here at BattRE - where we look, listen and design around their needs.

And that's why we decided to reinforce the idea of an electric scooter with metal panels for added strength and protection. It's the classic meets contemporary kind of Storie!


you're in control

Experience the feeling of confidence and control on every ride, with a high and agile motorcycle-like handling that puts you in command and offers utterly comfortable posture.



the right fit

We let you fit your life into your scooter and make the most of it. With one of the largest seats in the segment, you've got ample room to sit comfortably along with a large legroom.

A close-up, low-angle shot of a scooter's seat and footrest area. The seat is upholstered in a dark brown, textured material, possibly leather or faux leather, and is illuminated from the side, creating a strong highlight on its top surface. Below the seat, the footrest and side footrest are visible, also in a dark, polished finish. The background is dark and out of focus.

Talking about our scooters being a complete 'support', they have got pillion footpegs and a passenger side footrest too!

stand tall, ready

This tall boy comes packed with a powerful (2kW) IP67-rated BLDC hub motor manufactured by LUCAS TVS. Swift through the city's hustle and bustle with a top speed of 65 kmph.

With a range backup of 132 kms per charge, you will be ready for any challenge, be it grocery shopping or be it delivering smiles.





follow me home lights

will not let you walk in the dark. Toggle ON this feature on your BattRE app to allow it to assist you for upto 15 seconds when you have parked the scooter.

neo sync

your new way to connect

Storie's Neo Sync feature offers an optimised, precise and seamless experience through its interconnected Motor, Controller, Battery and the dedicated app. Our AI backed-intuitive-display is constantly learning the way you ride and helping you make sense of your commute.





making life easier

To take convenience a notch up, the 5" TFT smart display is equipped with Telematics, Navigation Assist, Distance-to-Empty display, Call notifications and distinct colours for each riding mode, i.e., Eco, Comfort, Sport, Parking and Reverse.

The display being your only point of interaction with the vehicle, we made sure the communication is simple, crisp and just-what-you-need.

Easy-to-access pocket at the front, a compact underseat storage at the rear and a larger-than-life legroom - offer you all the space that you would need. Grocery hook and USB charger add to the utility quotient.

Rely on this scooter as much as you want.

for you to indulge

Carefully and ergonomically crafted designs and selected materials indulge the senses, and intuitive AI-backed technology puts you in command. 0.9mm thick steel sheet metal panels, in 7 different skins, on the exterior add to the style and durability quotient. The comfy contemporary upholstery adds a touch of luxury.

7 vibrant colors to match your style!



for the tranquil



for the vibrant



for the knights



for the formal



for the wild



for the bold



for the serene



charging your scooter doesn't need a station

Take your detachable battery pack anywhere, be it your home or your office
And charge it just like you would charge your phone.



you have us whenever, wherever you need

Our only goal, here at BattRE, is to keep you delighted and content with our services. As a result, we provide you with the most unparalleled post sales consumer support, **24x7 Road Side Assistance** at every possible pin code and **Extended Warranty** options. We make owning the scooter as smooth as your ride.



your go-to app

Comprehensive and AI-backed ride analytics at your fingertips help you make sense of your commute, assess your overall riding pattern. Mileage report, last parked location, reduction in Carbon Emissions and Fuel saved - all this at a click? Yes! Commuting has come a long way!

What else? You can personalise your Storie, name it, locate it, lock it, toggle controls and check for its health. Not to forget, you can locate, navigate, book and pay for your nearest RE:charge station all on your BattRE app.



Scan to download
BattRE app

you inspire, we innovate

We created scooters with one single purpose:
to provide you with a scooter that perfectly fits you and your lifestyle

At the heart of your electric scooter is an efficient, responsive powertrain that meets your expectations of a fun, agile drive with exceptional comfort and distinctive minimalist design – built with care for people and the world we share

Everything with the scooter is self-assured and confident. With a distinct monochromatic colour theme, Storie proudly expresses the purposeful soul of achieving minimalism in design.

The scooter is truly and confidently urban.

We also know you care about the future of the planet. Since, BattRE is ideated and incubated with the purpose of achieving performance sustainably, we let you drive sustainably – without compromising on performance.

Our technologies not only help to save the planet, but also give you more enjoyment on every ride

**We happily walk the extra mile
to give you what you want.**



SPECIFICATIONS SHEET

Overview

Scooter Dimensions	1855 X 740 X 1175 mm
Kerb Weight	105 kgs
Mileage	132 kms per charge
Payload Capacity	255 kgs

Battery and Charger

Battery Chemistry	Lithium Ion (NCM)
Battery IP rating	IP65
Battery Life	1200 cycles
Battery Specifications	60V 52Ah
Charger Output	67.2V 10A
Charging Time	5 hours

Transmission

Motor Type	Lucas TVS BLDC Hub
Motor Power	2kW (peak)
Motor IP Rating	IP67
Controller Type	Lucas TVS Sinewave
Controller Specifications	60V 40A
Controller IP Rating	IP65
Regen Braking	Available

Tyres and Brakes

Tyre Type	CEAT Tubeless 3.0-10
Wheel Type	Steel Rims
Wheel Base	1370 mm
Braking type	Combi Braking System (CBS)

Chassis and Suspension

Front Suspension	Fork Type Hydraulic
Rear Suspension	Adjustable Hydraulic Coilover
Ground Clearance	200 mm

Electricals

Display	5" TFT Smart Display
Display IP Rating	IP65
Wires	4 mm sq. (cross sectional)
Headlamp	Halogen
Tail Lamp	LED
Turn Signal Lamp	Halogen

Safety and Comfort

Parking Mode	Available
Reverse Mode	Available
Pillion Rider Footpegs	Available
Passenger Side Footrest	Available
24x7 Road Side Assistance	Available
USB Charger	Available
Extended Warranty	Available

Neo Sync Features

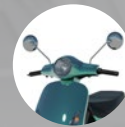
Navigation Assist
Call Alerts
Ride Analytics
Bluetooth Connectivity
(App compatible)
Hazard Lights
Follow Me Home Headlamps
Distance-To-Empty Display
Vehicle Health
OTA updates

Subscription Plan - 1st year free.
₹1180 per annum 2nd year onwards.

Accessories



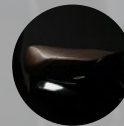
Luggage Box



Chrome Plated Rear View Mirrors



LED Headlamps



Tan Leather Seat



12" Front Wheel



Helmet
(comes in black & white)





PROUDLY MADE IN INDIA



WITH LOEV FROM

Batt⁺RE⁻[™]

#DontBeFuelish[™]

RIICO INDUSTRIAL AREA, BINDAYAKA, SIRSI ROAD, JAIPUR 302012

   @BattREmobility | www.battre.in